



MOVING HEALTH FORWARD

ANNUAL REPORT JULY 1, 2022 – JUNE 30, 2023



Wisconsin Partnership Program
UNIVERSITY OF WISCONSIN
SCHOOL OF MEDICINE AND PUBLIC HEALTH

The University of Wisconsin School of Medicine and Public Health (SMPH) is home to the Wisconsin Partnership Program, a grantmaking program within the SMPH established as the result of a generous endowment gift from Blue Cross Blue Shield United of Wisconsin's conversion to a stock insurance corporation. The Wisconsin Partnership Program expresses its continued gratitude for this gift to benefit the people of Wisconsin.

Our Mission

To bring about lasting improvements in health and well-being and advance health equity in Wisconsin through investments in community partnerships, education and research.

KEY

- AHW Advancing a Healthier Wisconsin
- ICTR Institute for Clinical and Translational Research
- MCW. . . . Medical College of Wisconsin
- NACHP . . . Native American Center for Health Professions
- OAC Oversight and Advisory Committee
- PERC . . . Partnership Education and Research Committee
- SMPH School of Medicine and Public Health
- WFAA Wisconsin Foundation and Alumni Association
- WPP Wisconsin Partnership Program

Table of Contents

- Message to Partners 4
- Overview. 5
- Grants Awarded by Type: 2004 - June 2023. 6
- Improving Health through Community Partnerships 8
- Highlighted Initiatives: Community Partnerships 9
- Strengthening the Health Care and Public Health Workforce 10
- Highlighted Initiatives: Education 11
- Transforming Health through Research 12
- Highlighted Initiatives: Research 13
- Evaluation and Impact 14
- Financial Overview 17
- Policies and Procedures 21
- Wisconsin Partnership Program Leadership 22
- Appendix 25

Message to Partners



It is our pleasure to present the Wisconsin Partnership Program's annual report for fiscal year 2022-2023.

The University of Wisconsin School of Medicine and Public Health (SMPH) and the Wisconsin Partnership Program are steadfast partners working towards a shared mission of improving health and advancing health equity.

This year the Wisconsin Partnership Program (WPP) continued to advance its mission through 20 new grants and 66 active partnerships that are propelling research and innovation, strengthening the medical and public health workforce and working to improve health and advance health equity for individuals, families and communities across our state.

Guiding this work is our understanding that some communities and populations are disproportionately impacted by health inequities, including the health impacts of the COVID-19 pandemic and social factors that influence health and well-being. We continue to partner with grantees to address these challenges and are pleased to share highlights of our progress and impact.

For example, community grantees are using WPP COVID-19 Response awards to support the social and emotional health of our state's adolescents as they navigate the lasting impact of COVID-19 on their worlds. As another example, a tremendously successful WPP-funded partnership with Marshfield Clinic Health System and students at UW-Eau Claire and UW-Stevens Point is addressing patients' urgent health needs, including food, housing and transportation, while making a lasting positive impact on the students' career trajectories.

The Wisconsin Partnership Program continues to drive innovations in medical education and workforce development. An exciting new partnership with the Native American Center for Health Professions at the SMPH will support NACHP's work to increase the representation of American Indian/Alaska Native health professionals in the health sciences fields.

Partnership-funded researchers are working across the spectrum of basic, clinical and translational science. Grantees are investigating the mechanisms of complex health problems including blindness, breast cancer and obesity. They are also seeking ways to improve health and enhance health care delivery through projects that provide innovative care and social support for new mothers and improve intensive care experiences for those with serious illness.

These highlights and more are featured on the following pages. The information within this report truly exemplifies the remarkable breadth, reach and impact of the Wisconsin Partnership Program as it partners to advance the exceptional work of many grantees and collaborators.

Thank you for your ongoing support of the Wisconsin Partnership Program. Together we will continue to work toward our shared vision of elevating health and health equity throughout Wisconsin.

Sincerely,

Handwritten signature of Robert N. Golden in black ink.

Robert N. Golden, MD
Robert Turell Professor in Medical Leadership
Dean, UW School of Medicine and Public Health
Vice Chancellor of Medical Affairs University of
Wisconsin-Madison

Handwritten signature of Amy JH Kind in black ink.

Amy JH Kind, MD, PhD
Executive Director, Wisconsin Partnership Program
Associate Dean, Social Health Sciences and Programs,
UW School of Medicine and Public Health



Overview

The Wisconsin Partnership Program (WPP) is a grantmaking program within the University of Wisconsin School of Medicine and Public Health (SMPH) committed to improving health and advancing health equity in Wisconsin through investments in research, education and community partnerships.

Since the Wisconsin Partnership Program began making grants in 2004, it has awarded **611 grants** totaling **\$292 million** to propel research, enhance medical education and workforce development, promote community partnerships and respond to the COVID-19 pandemic.

In fiscal year 2023, the Wisconsin Partnership Program awarded **20 new grants** and supported the progress of **66 active grants** and **26 concluding projects**. Through this work grantees are using innovative approaches to improve health and advance health equity across a wide range of health challenges, communities, populations and geographic areas.

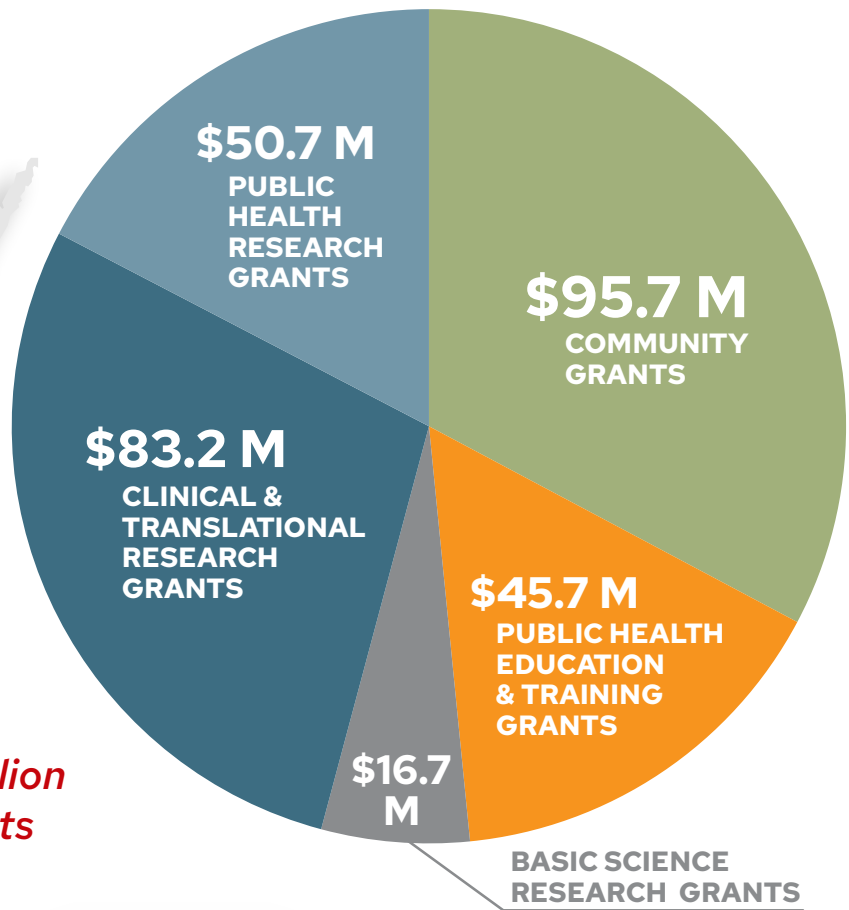
The Wisconsin Partnership Program is governed by two committees composed of faculty and community members. The Oversight and Advisory Committee directs and distributes funds for public health initiatives (community grants).

The Partnership Education and Research Committee allocates funds for education and research initiatives to improve population health. Their combined expertise and backgrounds guide the Wisconsin Partnership Program's processes for reviewing and awarding grants.

Grants Awarded by Type: 2004 - June 2023

SINCE 2004
611 grants
FOR
\$292 million

WPP grantees have leveraged an additional \$722 million to sustain their projects



New Grants Awarded Fiscal Year 2023 • July 1, 2022 – June 30 2023

EDUCATION AND RESEARCH GRANT PROGRAMS		
New Investigator Grants	3 grants	\$449,121
Strategic Research Grants	1 grant	\$899,556
Strategic Education Grants	4 grants	\$6.1 million
COMMUNITY GRANT PROGRAMS		
Community Impact Grants	2 grants	\$1 million
Maternal and Child Health Grants	10 grants	\$1.5 million

View the [appendix](#) for award descriptions.

Wisconsin Partnership Program By the Numbers

July 1, 2022–June 30, 2023

20

Number of grants awarded

\$10.6 million

Total amount awarded

66

Number of ongoing grants

26

Number of concluded grants

72

Number of counties reached by WPP-supported work *

\$722 Million

Total amount of funds leveraged by grantees from federal agencies
and other organizations to sustain or expand their work *

(* 2004 – June 30, 2023)



Improving Health through Community Partnerships

The Wisconsin Partnership Program's Community Grants Programs support a wide range of initiatives and collaborations to improve health and advance health equity in diverse populations and geographic areas across the state.

The Community Grant Programs support community-led projects and community-academic partnerships that seek to improve health and reduce health disparities by implementing a wide range of approaches and solutions to address the social factors that influence health and well-being.

The Wisconsin Partnership Program's Community Grant Programs each have a unique approach to improving health and advancing health equity. In alignment with the Wisconsin Idea, these grant programs bridge the resources of the university with the knowledge and experience of communities to positively impact lives across Wisconsin.

- The **Community Impact Grant Program** supports evidence-informed, community partnership initiatives that address the social determinants of health to improve health and advance health equity in Wisconsin communities. [View the 2022 Community Impact Grants that were awarded in fiscal year 2023.](#)

In fiscal year 2023, two Community Impact Grant award levels were offered to expand the funding opportunity to more community organizations across the state. One level was designed to support small or medium sized organizations; the second level supports larger organizations and requires an academic partner. The new awarded projects are slated to begin in January 2024.

- The **Maternal and Child Health Grant Program** provides funding to community-based organizations that are leading approaches and solutions to improve maternal and child health outcomes, with a focus on communities that have been disproportionately impacted by health inequities. In fiscal year 2023, WPP awarded \$1.5 million to **ten new maternal and child health projects** that support mothers and families at risk for poor health outcomes through home visiting programs, doula services and expanded partnerships with health care delivery systems.

353
COMMUNITY
GRANTS

\$95.7 M
IN COMMUNITY
GRANTS

2004 – JUNE 30, 2023



Highlighted Initiatives: Community Partnerships



Supporting Adolescent Mental Health

The social and school shutdowns of the pandemic disrupted some of the most important work of adolescence –developing autonomy from parents, connecting with peers and crafting a personal identity –resulting in a second epidemic: an adolescent mental health crisis.

In response, WPP developed a funding opportunity to address the social and emotional health needs of Wisconsin’s youth. Eight grants totaling \$1.2 million were awarded for community-led projects to boost adolescent leadership, peer connections and resilience for Wisconsin teens.

Projects across the state addressed a wide range of issues including: supporting mentors; testing bilingual teen group therapy; addressing social, racial and educational disparities and empowering teens. Through this work, Wisconsin teens are developing agency to solve the challenges they face, providing hope and resilience for their generation.

Read the [story](#).

Pictured above: PATCH Program participants; photo courtesy of grantee



Connecting Campuses, Clinics and Communities

In 2018, with WPP funding, Marshfield Clinic Health System (MCHS) launched the Community Connections Team (CCT) to connect patients with community services to meet vital needs that impact their health, including access to food, housing, energy assistance and transportation.

The CCT is staffed by trained volunteers including students from UW-Eau Claire and UW-Stevens Point. More than 140 students who are planning to enter a variety of health professions have been trained for the CCT and are gaining valuable experience in patient care, positively impacting their career trajectories.

To date, Marshfield health providers have screened 53,700 patients. Of those, 7,600 were referred to the CCT. As a result, CCT staff made more than 17,000 referrals to agencies such as food banks, WIC (Women, Infant, Children) programs, dental clinics and more to help patients meet critical health needs.

Read the [story](#).

Pictured above: MCHS Community Connections Team; photo courtesy of grantee



Improving Health for People in Recovery

Biehl Bridges to Recovery, a branch of the Marinette County Group Home Association, is using a WPP Community Impact Grant to improve the health and well-being of people in Marinette County with substance use disorder, or in recovery, by connecting them to sustainable employment opportunities that promote economic stability.

The initiative utilizes peer-driven support to empower individuals in recovery to obtain and maintain sustainable employment. The group also works with employers to break down the stigma around addiction and recovery to reduce barriers to employment. With access to sustainable employment, the individuals served by Biehl Bridges to Recovery will be more likely to experience housing stability, food security, access to health care and educational opportunities—vital factors to sustaining recovery and improving health.

View the [Funded Project page](#).



Strengthening the Health Care and Public Health Workforce

Building capacity in the medical and public health workforce in Wisconsin is essential to creating and improving health for patients and populations across our state. As part of its long-standing commitment to education, the Wisconsin Partnership Program continues to support a wide range of strategic training initiatives at the UW School of Medicine and Public Health (SMPH) as well as statewide investments in public health training. These investments ensure that the SMPH remains at the forefront of education innovation and that our future physicians and public health leaders are ready to meet Wisconsin's evolving and diverse health needs. These initiatives are also designed to increase Wisconsin's health care workforce and positively impact the health of patients and populations across Wisconsin.

WPP's education investments reach across the state in a number of impactful ways. In addition to the programs highlighted here, WPP grants are supporting the recruitment and retention of talented and diverse classes of medical students and WPP provides funding for the only Preventive Medicine Residency Program in the state. In addition, the WPP-funded Population Health Services Fellowship Program is training the next generation of public health leaders as they serve Wisconsin community organizations and public health agencies.

These investments and more will continue to build and strengthen the capacity of Wisconsin's health workforce to meet the needs of patients, populations and communities.

51
EDUCATION
GRANTS

\$45.7 M
IN EDUCATION
GRANTS
2004 - JUNE 30, 2023

Highlighted Initiatives: Education



Increasing Indigenous Representation in Medicine

The Native American Center for Health Professions (NACHP) at the UW SMPH is using a \$1.23 million, three-year grant from WPP for the new initiative, *Increasing Indigenous Representation In Medicine Through Academics Engagement And Innovation (IIMAGIN)*. IIMAGIN builds on NACHP's strong track record to expand the representation of American Indian/Alaska Native health professionals in the health sciences fields and within health care delivery settings.

Through this grant, NACHP is expanding pre-college and college pathway opportunities to increase American Indian/Alaska Native student recruitment and retention; establish a pre-faculty and faculty development pathway; and develop new health and medical curriculum offerings. The grant team is collaborating with the College of Menominee Nation and the Lac Courte Oreilles Ojibwe University to expand pre-college and college programming focused on health care career exploration.

Read the [IIMAGIN grant announcement](#).

IIMAGIN co-directors Danielle Yancey (standing) and Dr. Bret Benally Thompson (seated right) in the NACHP student center.

Building a Diverse Physician Workforce

The Wisconsin Partnership Program Scholarship provides four-year scholarships of full tuition support to increase the recruitment and retention of medical students at the UW SMPH who are historically underrepresented in medicine.

The scholarship program is helping attract talented and highly sought applicants from diverse backgrounds, including students like Dominique Petty, who provided this reflection:

"The rarity of the black doctor is what makes my ballad toward my MD important to me. This scholarship not only dismantles the financial stress of attending medical school but encourages me to become the best doctor that I can be, so that I can eventually be that black doctor that I never saw growing up."

The scholarship program is ensuring medical school is within reach for students who may otherwise face significant barriers and is building a stronger and more diverse physician workforce.

Learn more about the [WPP Scholarship Program](#).

Dominique Petty, SMPH Medical Student

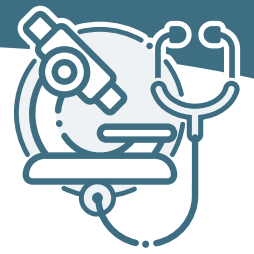
Fostering Community Health Engagement in Medical Education

Transforming Medical Education (TME) is a cornerstone of WPP's investments in medical education. Through TME, the SMPH continues to provide an innovative education model that infuses public health principles and practices with the SMPH medical curriculum.

TME integrates medical education curricular projects with community and clinical experiences to promote community engagement and ensure future physicians view their work with greater understanding of the individuals and communities they serve. One way TME integrates these experiences is through a curriculum block that immerses students with a community partner to further their community health engagement knowledge and skills. These experiences give students the opportunity to learn beyond their classroom and better understand the needs of the community.

Learn more about WPP's [education initiatives](#).

At Goodman Community Center, in Madison, Wisconsin, SMPH medical students recently led cooking classes for older adults.



Transforming Health through Research

The Wisconsin Partnership Program's (WPP) research grants improve health and advance health equity for patients and populations through projects that propel medical and public health research and discovery, and advance innovative approaches to addressing health challenges and improving health care delivery.

Research supported by WPP focuses on a wide range of pressing topics and critical health challenges facing the people of Wisconsin, including Alzheimer's disease, antibiotic resistance, blindness, cancer, COVID-19, diabetes, heart disease, health care delivery needs and more.

The Wisconsin Partnership Program administers a number of research grant programs including:

- The **Collaborative Health Sciences Grant Program** expands team science at the SMPH and across UW-Madison by bringing together interdisciplinary teams to advance novel research and education approaches to target complex health challenges. The latest projects are set to begin in September 2023.
- The **New Investigator Grant Program** fosters the development of early-career SMPH faculty as they initiate innovative pilot projects to improve health, health care and advance health equity. The funded projects have strong potential to leverage substantial funding from federal or other granting agencies.
- **Opportunity Grants** provide start-up funding to rapidly establish time-critical, high profile, high-impact state-of-the-art education and research projects to address Wisconsin's most pressing and complex health challenges.

- Through its **Strategic Education and Research Grant Programs**, the Wisconsin Partnership Program provides critical funding to first initiate or further enhance novel infrastructure programs vital to improving health and health care and advancing health equity in Wisconsin. WPP provides strategic grant funding to a number of key initiatives including the UW Institute for Clinical and Translational Research and the Population Health Services Fellowship Program. Previous grants established a number of key initiatives which are now fully sustained by non-WPP funding sources, including the Wisconsin Academy for Rural Medicine (WARM) and the Master of Public Health Program.

207
RESEARCH
GRANTS

\$150.6 M
IN RESEARCH
GRANTS

2004 – JUNE 30, 2023



Highlighted Initiatives: Research



Improving Postpartum Care for Black Mothers

Black mothers in Wisconsin experience maternal and child health disparities that result in adverse birth outcomes and high infant mortality, which are amongst the worst in the United States.

Community and university partners are using a WPP grant to scientifically design and rigorously test a new care approach that aligns the efforts of health care providers and trusted community partners to reduce disparities and improve postpartum care for Black women.

Led by Kara Hoppe, DO, MS, assistant professor, Department of Obstetrics and Gynecology and collaborator Tia Murray, BS, co-founder of Harambee Village, the project expands upon a successful telehealth blood pressure home monitoring program and incorporates an all-inclusive approach to addressing the postpartum needs of Black mothers including basic postpartum care, lactation, social and mental health support. Data from this project will be used to compete for federal funding to expand and further test the program.

Read the [article](#).

A program participant monitors her blood pressure.



Designing Effective Therapies to Cure Blindness

Death of photoreceptors in the retina is the ultimate cause of blindness in various diseases and there are no treatment options available for these retinal degenerative diseases. Raunak Sinha, PhD, assistant professor, Department of Neuroscience, is using a New Investigator Grant from the Wisconsin Partnership Program to help launch a novel research area to better understand how genetics, environments and drugs impact human retinal cells.

The research, which has tremendous potential for translating into possible treatments and cures for blindness, will be the basis of a future National Institutes of Health research grant.

Read the [project description](#).

Dr. Raunak Sinha, SMPH Department of Neuroscience



Improving ICU Care for Older Adults Near the End-of-Life

In Wisconsin, one in three older adults is admitted to an intensive care unit (ICU) at or near the end of their life. Improved communications and new models of care are needed to ensure care and treatments align with the patient's (or their family's) values.

Jacqueline Kruser, MD, assistant professor in the Department of Medicine, seeks to improve end-of-life experiences for patients, caregivers and clinicians by optimizing time-limited trials, an innovative care model that honors the patient's and family's goals while also improving communication in important ways about the choices surrounding ICU care.

Dr. Kruser is designing and testing a graphic aid to support ICU patients, clinicians and caregivers in planning a time-limited trial. The visual, when put into practice, has the potential to improve care delivery. The project's data will be used to leverage additional research and testing in future clinical trials.

Read the [project description](#).

Dr. Jacqueline Kruser consults with a patient's family.

Evaluation and Impact

The Wisconsin Partnership Program (WPP) conducts evaluation at multiple levels, assessing outcomes such as:

- sustainability of grantee projects by measuring leveraged funding from external funders
- creation and dissemination of knowledge through publication of results
- multi-level systems and process improvements based on evidence
- insights gained from grantee projects

The ultimate goal of WPP evaluation is to understand and look for opportunities to amplify the impact that WPP-funded work is having on health, well-being and health equity of people across the state of Wisconsin. For community grants, this means engaging with the evaluation plan developed with guidance from grant recipients, staff, Oversight and Advisory Committee members and others. This plan serves as a guidance document from which we work collaboratively with grantees to create individualized

reporting templates that use specific metrics to track each project's outcomes and progress. Similarly, for research grants we are using a standardized approach to data collection to understand the impact of awards we have made. Progress reports, publications, leveraged grants and media coverage are all elements that inform our understanding of the work being done using WPP funds.

Outcome Reports

The Wisconsin Partnership Program publishes outcome reports for concluded grants each fiscal year. The reports highlight the progress and achievements of concluded grants and reflect grantees' demonstrated success and impact across a wide variety of domains. These reports are published online to ensure optimal access and data visualizations for all.

View our [Funded Projects](#) page for more information on WPP awards, including the results of concluded grants.



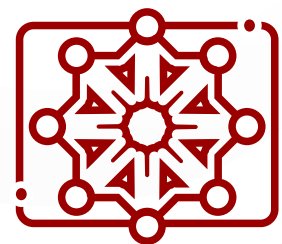
\$40.4 M

Total amount of funds leveraged by grantees from federal agencies and other organizations to sustain or expand their work (July 1, 2022 – June 30, 2023)



850

Number of articles, presentations and other media sharing findings of WPP projects (July 1, 2022 – June 30, 2023)



211

Unique collaborations funded by WPP grants (July 1, 2022 – June 30, 2023)

Building Capacity and Connection

Convening Events

During the past year, WPP offered opportunities for community grantees to connect and learn through convening events. These events are designed to support capacity-building, provide networking opportunities, respond to grantee needs and interests and highlight the successes and impact of grantees through collaborative presentations.

This past year, WPP hosted an in-person convening event in Milwaukee for its Maternal and Child Health grant recipients. The event offered participants the opportunity to meet, share ideas and discuss challenges and solutions to reducing the health disparities in Black maternal and infant health outcomes.

WPP also hosted a virtual event, Navigating Social Media for Nonprofits, for community partners and public health departments. The event featured a national expert as well as a panel of three WPP grantees representing urban and rural areas of the state, who shared their organizations' strategies, challenges and success in managing their social media presence.

These events were well-received by participants and WPP will continue to offer convening events, both virtual and in-person, to build connection and meet the needs of our community grant partners.

Evaluation Support

WPP is building capacity in Wisconsin non-profits and public health departments. Evaluation can be challenging and costly, yet it is a vital component of demonstrating success and making the case for sustainability for any project or program. To help increase capacity in this arena, WPP grant recipients are offered the chance to attend regular office hours with a doctoral-level expert in evaluation theory and methods to get assistance with evaluation-related questions, operations and strategies. In addition, each new community grant recipient has the opportunity to engage in an evaluation consultation with this expert at the start of their grant to help them plan evaluation activities across the duration of their grant award, building organization-specific evaluation knowledge and capacity for the future across each program.

Partnership for a Healthy Wisconsin

In 2021, the Wisconsin Partnership Program launched *Partnership for a Healthy Wisconsin* with the Advancing a Healthier Wisconsin Endowment (AHW) at the Medical College of Wisconsin to offer our community grantees and public health departments free access to *Catchafire*, a capacity-building platform that helps nonprofits advance their missions.

Catchafire connects participating organizations with a network of talented professionals who provide pro bono services and expertise in areas including fundraising, marketing, technology, finance, human resources, design and more.

Current AHW and WPP community grantees and Wisconsin public health departments are actively using this innovative service to strengthen their operations and better meet the needs of the

communities they serve. Some of the most popular projects requested include:

- translation
- organizational strategy
- finance
- leadership coaching
- graphic design support
- technical training

To date, this impactful partnership has resulted in more than 120 organization/volunteer project matches, savings of more than \$448,000 and 2100 donated hours for project support provided to participating nonprofits and public health agencies.

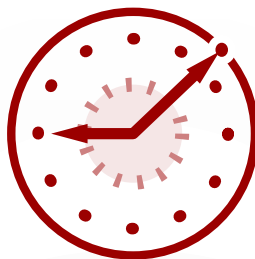
\$448,336

Total Dollars Saved By Nonprofits Using *Catchafire*



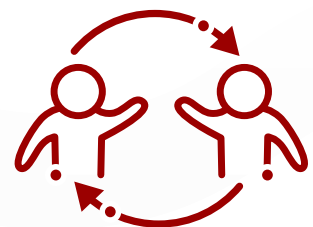
2,135

Total Hours Donated by *Catchafire* Volunteers



124

Total Matches for Projects and *Catchafire* Volunteers (as of May 2023)



Financial Overview

The financial resources that support the Wisconsin Partnership Program grants were provided by the conversion of Blue Cross Blue Shield United of Wisconsin and also include funds generated from investment earnings. All funds are in the custody of and managed by the Wisconsin Foundation and Alumni Association (WFAA). Every month, funds are transferred to the School of Medicine and Public Health to reimburse expenditures in accordance with the Order of the Office of the Commissioner of Insurance and the five-year expenditure plans.

Investments

Current investments consist of participation in the WFAA Short Term Investment Portfolio (STIP). The primary investment objective of the STIP is to preserve the capital and provide liquidity when dollars are called. The STIP is invested in high-quality, short- and medium-term fixed income securities, as well as a small portion that is invested in highly diversified equity investments. Noncurrent investments consist of participation in the WFAA Endowment portfolio. The primary investment objective of the Endowment portfolio is to maximize long-term real returns commensurate with stated risk tolerance, thereby maximizing long-term purchasing power of the funds, net of distributions for current spending needs. Endowment fund distributions to the spendable funds are based on the WFAA spending policy, which is applied to the market value of the endowment funds.

WFAA Institutional Advancement Fee

The WFAA assesses an Institutional Advancement Fee (IAF) of 1 percent on all funds participating in its endowment pool, including Wisconsin Partnership Program funds, as a primary source of revenue for WFAA operations. This assessment, and its usage,

is determined by the WFAA board of directors, and is not controlled by the Wisconsin Partnership Program. The IAF for fiscal years 2023 and 2022 were \$3,684,912 and \$4,336,524, respectively, and are shown under expenses on the Statement of Revenues, Expenses and Changes in Net Assets on page 19.

WFAA decreases the Institutional Advancement Fee to 0.7 percent on cumulative fund amounts above \$250 million per qualified relationship. Partnership Program funds exceed the established level, and savings from this fee reduction are fully allocated to the Oversight and Advisory Committee for public health initiatives. These savings were \$355,473 and \$550,957 for fiscal years ending June 30, 2023 and 2022, respectively.

Grants Payable

Grants payable amounts are recorded as of the date of approval by the Oversight and Advisory committee or Partnership Education and Research Committee. The liability reflects the total amount of the grant award, less any payments or adjustments made on or before June 30, 2023. Any subsequent modifications to grant awards are recorded as adjustments of grant expenses in the year the adjustment occurs.

Net Assets

Temporarily Restricted: funds consist of interest and investment income earned by the funds invested in the STIP or endowment portfolio at WFAA and the cumulative net gains or losses related to the permanently restricted funds that are invested within the endowment portfolio. These funds are available to support program expenditures.

Permanently Restricted: The portion of the gift proceeds originally allocated to permanently endow

the Wisconsin Partnership Program. These funds have been invested in the endowment portfolio of the Foundation and the corpus is not available to support program expenditures.

OAC Review and Assessment of the Allocated Percentage of Funds

As outlined in its founding documents, the Oversight and Advisory Committee (OAC) annually reviews and assesses the allocation percentage for public health initiatives and for education and research initiatives. The OAC took up this matter on February 22, 2023. It was moved to retain the allocation of 35 percent for public health initiatives and 65 percent for education and research initiatives, and the motion was unanimously passed.

Supplanting Policy

Based on the non-supplanting determination made by the School of Medicine and Public Health Chief Financial Officer, the Dean of the School of Medicine and Public Health has attested to compliance with the supplanting prohibition in this Annual Report. The UW-Madison Vice Chancellor of Finance and Administration has also attested that UW-Madison and the UW System have complied with the supplanting prohibition.

Financial Statements

The following financial reports consolidate activities of the Wisconsin Foundation and Alumni Association and the School of Medicine and Public Health for the fiscal year ending June 2023 and June 2022.

Statement of Net Assets

	June 30, 2023	June 30, 2022
ASSETS		
UW SMPH Cash	\$ (1,474,833)	\$ (1,327,208)
Current Investments	16,874,077	15,923,705
Noncurrent Investments	384,748,419	367,959,583
Total Assets	\$ 400,147,663	\$ 382,556,080
LIABILITIES		
OAC Grants Payable	\$ 18,066,143	\$ 21,624,902
PERC Grants Payable	14,959,206	17,522,598
Total Liabilities	33,025,349	39,147,500
NET ASSETS		
Temporarily Restricted	83,506,047	59,792,313
Permanently Restricted	283,616,267	283,616,267
Total Net Assets	367,122,314	343,408,580
TOTAL LIABILITIES AND NET ASSETS	\$ 400,147,663	\$ 382,556,080

Statement of Revenues, Expenses and Changes in Net Assets

	Year ended June 30, 2023	Year Ended June 30, 2022
REVENUES		
Interest Income	67,742	7,871
Change in Fair Value of Endowed Funds	37,929,283	(46,039,073)
Total Revenues	37,997,025	(46,031,202)
EXPENSES		
WFAA Institutional Advancement Fee	3,684,912	4,336,524
Less: WFAA IAF Rebate	(355,473)	(550,957)
OAC Initiatives		
Administrative Expenses	532,220	470,569
Grant Expenses	3,084,384	6,727,502
PERC Initiatives		
Administrative Expenses	988,409	873,914
Grant Expenses	6,348,839	11,332,873
Total Expenses	14,283,291	23,190,425
Increase/(Decrease) in Net Assets	23,713,734	(69,221,627)
Net Assets - Beginning of year	343,408,580	412,630,207
Net Assets - End of year	\$ 367,122,314	\$ 343,408,580

Grant Award Commitments for the Fiscal Year Ended June 30, 2023

	Net Grant Awards ¹	Inception to date Disbursements	Outstanding Grant Commitments
Public Health Initiatives			
Grants awarded from Inception to FY2022	\$ 100,611,484	\$ 85,642,081	\$ 14,969,403
FY2023 Awards	3,207,385	110,645	3,096,740
Subtotal	\$ 103,818,869	\$ 85,752,726	\$ 18,066,143
Medical Education and Research Initiatives			
Grants awarded from Inception to FY2022	\$ 171,698,810	\$ 163,237,575	\$ 8,461,235
FY2023 Awards	7,387,878	889,907	6,497,971
Subtotal	\$ 179,086,688	\$ 164,127,482	\$ 14,959,206
Total	\$ 282,905,557	\$ 249,880,208	\$ 33,025,349

¹Reflects grants awarded less any lapsed awards returned to the Wisconsin Partnership Program

Statement of Cash Receipts and Disbursements (UW School of Medicine and Public Health)

	FY2023	FY2022
BALANCE, JULY 1	\$ (1,327,208)	\$ (1,427,585)
CASH RECEIPTS		
Payments received from the UW Foundation	16,928,381	17,238,003
Total Receipts	16,928,381	17,238,003
CASH DISBURSEMENTS		
Public Health Initiatives	6,643,145	5,917,540
Medical Education and Research Initiatives	8,912,232	9,875,603
PROGRAM ADMINISTRATION		
Salaries	959,012	803,029
Fringe Benefits	341,918	278,274
Travel	1,374	100
Supplies and Services	100,875	64,773
Consultants and Contracts	94,584	186,307
Other Disbursements	22,866	12,000
Total Program Administration	1,520,629	1,344,483
Total Disbursements	17,076,006	17,137,626
Increase (Decrease) In Balance	(147,625)	100,377
Balance, June 30	\$ (1,474,833)	\$ (1,327,208)

Policies and Procedures

The Wisconsin Partnership Program and its Oversight and Advisory Committee (OAC) and Partnership Education and Research Committee (PERC) conduct their operations, grantmaking processes and stewardship responsibility in accordance with program requirements and the Insurance Commissioner's Order and Grant Agreement as well as federal, state and local laws. OAC and PERC follow standard Request for Proposal (RFP) guidelines, requirements, multistep review processes and selection criteria throughout the grantmaking process. In addition, the Wisconsin Partnership Program evaluates the progress and outcomes of funded grants using annual and final reports, financial reports, presentations and site visits.

Open Meeting and Public Records

As directed by the Insurance Commissioner's Order, the Wisconsin Partnership Program conducts its operations and processes in accordance with Wisconsin's Open Meetings and Public Records Laws. Meetings of the OAC and PERC and their subcommittees are open to the public. Committee agendas and minutes are posted on the Wisconsin Partnership Program's website.

Diversity Policy

The Wisconsin Partnership Program is committed to upholding and promoting the diversity policies of the UW System Board of Regents and UW-Madison. Furthermore, the Wisconsin Partnership Program has adopted a diversity policy in alignment with those of the UW System and UW-Madison to inform the Partnership Program's goals, objectives and processes.

Learn more

The Wisconsin Partnership Program's website provides detailed information on our policies and procedures for applicants and grant recipients.

View the resources and policies webpage:

wpp.med.wisc.edu/grant-funding/resources-policies



Wisconsin Partnership Program Leadership

The Oversight and Advisory Committee (OAC) and the Partnership Education and Research Committee (PERC) serve as the Wisconsin Partnership Program's governance committees.

Oversight and Advisory Committee

The University of Wisconsin (UW) System Board of Regents appoints four representatives from the UW School of Medicine and Public Health (SMPH) and four community health advocates representing different health categories to the nine-member Oversight and Advisory Committee. The Wisconsin Office of the Commissioner of Insurance appoints one OAC member. Members serve four-year terms. One member of the Board of Regents and a representative of the UW-Madison Office of the Chancellor also serve as liaisons to the OAC.

The primary responsibilities of the OAC are to:

- Direct and approve available funds for community-engaged public health initiatives and public health education and training
- Provide public representation through the OAC's four health advocates
- Offer comment and advice on the PERC's grant allocations

Community Health Advocate Appointees

Cedric Johnson

OAC Vice Chair
Manager, Inclusion and Community Partnerships, Exact Sciences
Category: Children's and Family Health

Katherine Marks, BA

Outreach Specialist, City of Kenosha
Category: Urban Health
Term Ended: October 2022

Gregory Nycz

Executive Director, Family Health Center of Marshfield, Inc.
Category: Rural Health

Sue Smith, RN, MSN, CPM

OAC Secretary
Director/Health Officer, Wood County Health Department
Category: Statewide Health Care

Insurance Commissioner's Appointee

Jennifer Stegall

Executive Senior Policy Advisor
Office of Commissioner of Insurance

UW School of Medicine and Public Health Appointees

Elizabeth Felton, MD, PhD

Assistant Professor, Department of Neurology
Appointed: December 2022

Amy Kind, MD, PhD

Executive Director, Wisconsin Partnership Program
Associate Dean, Social Health Sciences and Programs

Megan Moreno, MD, MEd, MPH

Academic Division Chief, Vice Chair of Digital Health
Professor, Department of Pediatrics
Resigned effective: October 2022

Richard L. Moss, PhD

PERC Chair
Professor Emeritus, Department of Cell and Regenerative Biology

Manish Shah, MD, MPH

OAC Chair
Professor and Chair, BerbeeWalsh Department of Emergency Medicine

Partnership Education and Research Committee

The Partnership Education and Research Committee (PERC) broadly represents the faculty, staff and leadership at the UW School of Medicine and Public Health and includes representatives from the Oversight and Advisory Committee (OAC).

The PERC allocates and distributes funds designated for education and research initiatives that advance health and health equity. The primary responsibilities of the PERC are to:

- Direct and approve available funds for faculty-initiated education and research
- Maintain a balanced portfolio of grant investments in population health
- Strengthen collaborations with communities and health leaders statewide

SMPH Leadership

Jon Audhya, PhD

Senior Associate Dean for Basic Research, Biotechnology and Graduate Studies
Appointed: April 2023

Amy Kind, MD, PhD

Executive Director, Wisconsin Partnership Program
Associate Dean for Social Health Sciences and Programs

Richard L. Moss, PhD*

PERC Chair*
Professor Emeritus, Department of Cell and Regenerative Biology

Elizabeth Petty, MD*

Senior Associate Dean, Academic Affairs and Professor, Department of Pediatrics

Department Chairs

Beth Drolet, MD

Professor and Chair, Department of Dermatology
Representative: Clinical Chairs

Kathleen Shannon, MD*

Detling Professor and Chair, Department of Neurology
Representative: Clinical Chairs

Deneen Wellik, PhD

Professor and Chair, Department of Cell and Regenerative Biology
Representative: Basic Science Chairs
Term Ended: March 2023

Faculty Representatives

Elaine Alarid, PhD

Review Panel Chair*
Professor, Department of Oncology
Representative: Basic Science Faculty
Term Ended: March 2023

David Allen, MD

Professor, Department of Pediatrics
Representative: Clinical Faculty

Elizabeth Cox, MD, PhD

Professor, Department of Pediatrics
Director, UW-Madison Prevention Research Center
Representative: Clinical Faculty
Resigned effective: July 2022

Amy Fowler, MD, PhD

Associate Professor, Department of Radiology
Appointed: January 2023

Ann Sheehy, MD, MS

Associate Professor, Department of Medicine
Representative: Clinical Faculty
Appointed: November 2022

Jason Stephenson, MD

Associate Dean for Multicultural Affairs for Health Professions Learners
Associate Professor, Department of Radiology
Representative: Clinical Faculty
Term Ended: March 2023

Oversight and Advisory Committee Appointees

Gregory Nycz

OAC Health Advocate*
Executive Director, Family Health Center of Marshfield, Inc.

Manish Shah, MD, MPH

OAC Chair
Professor and Chair, BerbeeWalsh Department of Emergency Medicine
*PERC Executive Committee Member

Wisconsin Partnership Program Liaisons

The UW–Madison Office of the Chancellor and University of Wisconsin System Board of Regents each appoints a liaison to advise the Wisconsin Partnership Program leadership and committees.

UW–Madison Office of the Chancellor

Norman Drinkwater, PhD

UW System Board of Regents

Dana Wachs

Member, University of Wisconsin System Board of Regents

Wisconsin Partnership Program Staff

Amy Kind, MD, PhD

Executive Director, Wisconsin Partnership Program
Associate Dean for Social Health Sciences and Programs

Lindsay Barone, PhD

Evaluator

Aimee Haase

Program Officer

Kattia Jimenez

Program Officer

Nathan Kersten

Financial Specialist

Tonya Mathison

Operations Associate Director

Renuka Mayadev, JD

Program Advisor

Megan Miller, MPA

Administrative Director

Stacey Novogoratz

Graduate Student Project Assistant

Anne Pankratz

Communications Specialist

Jaimee Prado

Graduate Student Project Assistant

Jonathan Thomas

Finance Associate Director

Katherine Vickerman

Graduate Student Project Assistant

Stacie Vik

Executive Assistant

Debbie Wu

Accountant

Appendix

GRANTMAKING ACTIVITY DURING FISCAL YEAR 2022-2023

The Wisconsin Partnership Program advances its mission through a strong portfolio of grant programs that support research, education and training and community partnerships to improve health and advance health equity across a broad range of health topics, populations and geographic areas.

Grantees are leading research, education and community initiatives that span a broad and diverse range of topics. Their work is addressing some of the state's most stubborn health challenges and creating approaches and solutions to improve health and well-being for the people of Wisconsin.

In fiscal year 2023, the Wisconsin Partnership Program awarded 20 new grants for a total of \$10.6 million and supported the progress of 66 active grants and 26 concluded grants.

20 New Grants

66 Active Grants

\$10.6 million
Awarded in New Grants

26 Concluded Grants

AWARDED GRANTS

COMMUNITY GRANTS

The Wisconsin Partnership Program's Oversight and Advisory Committee directs and distributes funds for community-led public health initiatives as well as public health education and training. The community grant programs support community-engaged and initiated projects that improve health and advance health equity in diverse populations and geographic areas across the state.

Community Impact Grants

During this fiscal year, the Community Impact Grant Program provided two new awards of \$500,000 each over three years to support large-scale, evidence-based, community-academic partnerships designed to achieve sustainable systems change to improve health and advance health equity.

Each awarded \$500,000

Name of Project	Community Lead Organization	Academic Partner
Biehl Bridges to Recovery "Advancing Health Equity through Economic Stabilization within the Recovery Community"	Marinette Group Home Association	Jennifer Park-Mroch, PhD, UW-Madison Extension
Coalition on Lead Emergency Making Milwaukee a Lead Safe City	Walnut Way Conservation Corp	Emmanuel Ngui, Dr.PH, Zilber School of Public Health, UW-Milwaukee

Maternal and Child Health Grants

The Maternal and Child Health Grant Program provided up to \$150,000 to the following community-led projects to improve maternal and child health outcomes, with a focus on under-resourced or marginalized communities.

Name of Project	Community Lead Organization
Development of an OB Nurse Navigator Program in a Rural Critical Access Hospital	St. Croix Regional Medical Center
Door County Welcome Baby Continuum Project	Family Services of Northeast Wisconsin Inc
Gerald L. Ignace Indian Health Center: Native Parent Connection Program	Gerald L. Ignace Indian Health Center
Improving Health Outcomes for Families: Evidence-Based Home Visiting	Wood County Health Department
Improving Maternal & Child Health Outcomes through Great Rivers HUB and Community Health Worker/Doula Workforce Expansion	Great Rivers United Way
Improving Maternal Child Health for the Somali Community in Barron County	Barron County
Jardin de Espacios (Garden of Spaces): Designing Well-Being During the Perinatal Journey	Public Health Madison & Dane County
Marathon County Start Right	Children's Service Society of Wisconsin
Milwaukee Start Right	Children's Service Society of Wisconsin
Support for Mothers and Infants from the Amish and Mennonite (Plain) Communities	Center for Special Children, Vernon Memorial Healthcare La Farge Clinic

EDUCATION AND RESEARCH GRANTS

The Partnership Education and Research Committee allocates funds for faculty-led research and education initiatives to improve population health. These education and research grant programs address issues of health and health care and advance health equity through novel basic, clinical, translational and applied public health research as well as through innovative education and training.

New Investigator Grants

The New Investigator Program fosters development of early-career SMPH faculty as they initiate new, innovative pilot projects that address Wisconsin's health issues with strong potential to leverage more substantial funding from federal or other granting agencies. The following awards were made for \$150,000 each over two years.

Project Name	Principal Investigator
Defining Stromal Mechanisms of ER+ Breast Cancer Dissemination, Dormancy, and Metastatic Recurrence	Suzanne Ponik, PhD, Assistant Professor, Department of Cell and Regenerative Biology
Improving ICU Care for Older Adults Near the End of Life through Time-Limited Trials	Jacqueline Kruser, MD, Assistant Professor, Department of Medicine
Modulating Adipose Tissue Heme Biosynthesis to Promote Energy Expenditure in Obesity	Andrea Galmozzi, PhD, Assistant Professor, Department of Medicine

Strategic Education and Research Grants

In alignment with the strategic direction of the UW School of Medicine and Public Health, the Wisconsin Partnership Program provides critical funding through the Strategic Grant Program to initiate or further enhance novel education and research programs vital to improving health and health care and advancing health equity in Wisconsin and beyond. The following strategic grants were awarded during this reporting period:

Project Name	Principal Investigator	Amount
Increasing Indigenous Representation in Medicine through Academics Engagement and Innovation (IIMAGIN)	Bret Benally Thompson, Associate Clinical Professor, Department of Medicine; Faculty Advisor, Native American Center for Health Professions	\$1,230,000
University of Wisconsin Preventive Medicine Residency Program	Jonathan Temte, MD, PhD, Professor, Department of Family Medicine	\$402,666
Population Health Services Fellowship Program *	Thomas Oliver, PhD, MHA, Professor, Population Health Sciences Co-Principal Investigator: Wajiha Akhtar, PhD, MPH, Assistant Director, UW Population Health	\$710,062 (OAC) \$1,318,686 (PERC)

Project Name	Principal Investigator	Amount
Transforming Medical Education 2023-2026: Building a Center for Innovation, Scholarship and Research in Undergraduate Medical Education	Shobhina Chheda, MD, MPH, Professor, Department of Medicine	\$2,462,849

Project Name	Principal Investigator	Amount
Survey of the Health of Wisconsin (SHOW)	Jomol Mathew, Phd, Associate Professor, Population Health Sciences	\$899,556

UW Institute for Clinical and Translational Research (ICTR) Pilot Awards Program

The Wisconsin Partnership Program provides funding to the UW Institute for Clinical and Translational Research (ICTR) to support its Pilot Awards Program. Projects focus on clinical, community and patient-centered outcomes and dissemination and implementation of evidence-based, community-driven interventions. The Wisconsin Partnership Program supports the following ICTR pilot projects that were awarded in fiscal year 2023. [View the awards list.](#)

Project Name	Principal Investigator (PI)	Community Partner	Amount	Type
Clarifying Misbeliefs About Hydroxychloroquine (HCQ): Developing an Individualized Decision Aid for Diverse Patients with Lupus (HCQ-IDEAL)	Shivani Garg, MD, Assistant Professor, Department of Medicine	Medical College of Wisconsin, UW and Meriter Rheumatology Clinics, Latino Health Council – Madison, UW Health – Pharmacy, UW Health Rheumatology, Lupus Foundation of America	\$150,000	D&I
Cognitive Rehabilitation for Long COVID Patients with Brain Fog – the First Step	Aurora PopVicas, MD, MPH, Associate Professor, CHS, Department of Medicine	Access Community Health Center – Madison, UW Health Long COVID outpatient clinic, All of Us Research Program	\$75,000	CCOR
Community-Engaged Adaptation of a Well-being Intervention to Support Successful Reentry Following Incarceration	Daniel Grupe, PhD, Associate Scientist, Center for Healthy Minds	Nehemiah Center for Urban Leadership Development	\$75,000	CHER

Project Name	Principal Investigator (PI)	Community Partner	Amount	Type
Culturally Tailoring the Delivery of an Evidence-Based Diabetes Self-Management Program for Black Adults to Enhance its Reach, Adoption and Implementation	Olayinka Shiyabola, PhD, Associate Professor, UW-Madison School of Pharmacy	Wisconsin Institute for Healthy Aging, Grace Fellowship Church	\$150,000	D&I
Racial and Geographic Disparities of Prenatal Care Coordination in Wisconsin	David Mallinson, PhD, Research Fellow, Department of Family Medicine and Community Health (PI); Lawrence Berger, PhD (Mentor); Tiffany Green, PhD; Madelyne Greene, PhD, BSN, BA (Co-mentors)	Title V Maternal and Child Health (MCCH) Program at the Wisconsin Department of Health Services	\$10,000	AHEAD
Reducing Racial Disparities in Smoking: The Milwaukee Collaboration	Megan Piper, PhD, Professor, Department of Medicine; Co-director of Research, Center for Tobacco Research and Intervention	WI Tobacco Prevention and Control Program, Jump at the Sun Consultants, Wisconsin Women's Health Foundation	\$100,000	SPER
Developing the Survey Instrument: Recognizing Access and Management Associated Diabetes Adversities in Nationwide Muslims in the US (RAMADAN)	Asma Ali, Pharm D, PhD, Research Fellow, Department of Family Medicine and Community Health (PI) Betty Chewning, PhD (Mentor)	Muslim Community and Health Center	\$10,000	AHEAD
Identifying Mechanisms Underlying Neighborhood Disadvantage-Associated Disparities in Outcomes After Complex Cancer Surgery	Clayton Marcinak, MD, Research Resident, Department of Surgery (PI) Syed Nabeel Zafar, MD, MPH; Noelle LoConte, MD (Co-mentors)	Greater Richland Area Cancer Elimination (GRACE), UW Carbone Cancer Center Office of Community Outreach and Engagement	\$10,000	AHEAD
Peer-led trauma therapy for re-entry	Michael Koenigs, PhD, Professor, Department of Psychiatry	Nehemiah Community Development	\$75,000	CCOR

AHEAD: Advancing Health Equity and Diversity; CCOR: Clinical and Community Outcomes Research; D&I: Dissemination and Implementation Research; SPER: Stakeholder and Patient Engaged Research

Concluded Grants

The following grants concluded during the period of July 1, 2022 – June 30, 2023. The outcome reports for these projects are posted on the Wisconsin Partnership Program’s Funded Projects webpage, after final reports have been submitted by grantees.

COMMUNITY GRANTS

Community Catalyst Grants

Alzheimer’s Disease and Related Dementia Education and Awareness Initiative for Wisconsin’s Indian Country
Great Lakes Native American Elder Association (GLNAEA)

Community Collaboration Grants

Central Wisconsin Health Partnership’s Collective Impact: Moving Towards Resilience
Family Health La Clinica

Health Equity and the Role of Partnerships: Our Safe, Healthy and Beautiful Neighborhoods
Common Wealth Development, Inc.

Community Impact Grants

Creating Conditions to Improve Housing Policy For Healthier Families
Community Advocates, Inc.

Healthy Workers, Healthy Wisconsin
Community Advocates, Inc.

Improving Assisted Living Quality through Collaborative System Change
Wisconsin Department of Health Services

Legacy Community Health Alliance
Center of Wisconsin Strategy (COWS)

Race to Equity Wisconsin
Kids Forward, Inc.

Maternal and Child Health Grants

WeRISE Community Doula Program
African American Breastfeeding Network

EDUCATION AND RESEARCH GRANTS

COVID-19 Response Grants

Safe and Healthy Schools

Ellen Wald, MD, Professor, Department of Pediatrics

The Role of Social Media and Community Advocates in Addressing the Health Consequences of COVID-19 In Black, Latinx and American Indian Communities

Carey Gleason, PhD, Associate Professor, Department of Medicine

UW Student Health Care Worker Tuition Program (UW-SHCWTP)

Lisa Bratzke, PhD, RN, ANP-BC, FAHA, Associate Professor, UW–Madison School of Nursing

Collaborative Health Sciences Grants

Defining and Targeting Novel Anti-viral and Anti-cancer T Cell Immunity

Shigeki Miyamoto, PhD, Professor, Department of Oncology

Leaving Prison and Connecting with Medical Care: Medicaid Expansion, Treatment Access and Outcomes for Opioid Use Disorder and Hepatitis C Infection

Marguerite Burns, PhD, Associate Professor, Department of Population Health Sciences

UW Innovations in Malignancy Personalized Advanced Cell Therapies (UW-IMPACT)

Jacques Galipeau, MD, Professor, UW–Madison Stem Cell & Regenerative Medicine Center

New Investigator Program Grants

Addressing Black Infant Mortality in Wisconsin through a Collaborative Health Equity Approach to Community-Based, Group Prenatal Care and Infant Support

Jasmine Zapata, MD, MPH, Assistant Professor, Department of Pediatrics

Advancing Postpartum Care for Black Women in Wisconsin by Engaging Community Partners with a Home Telehealth Service for Hypertension– A Feasibility Project

Kara Hoppe, DO, Associate Professor, Department of Obstetrics and Gynecology

Modeling Basal Forebrain Cholinergic Vulnerability in Down Syndrome

Anita Bhattacharyya, PhD, Assistant Professor, Department of Cell and Regenerative Biology

Molecular Basis of Immune Variations

Yun Liang, PhD, Assistant Professor, Department of Medical Microbiology and Immunology

PERC Opportunity Grants

Enabling Clinicians and Healthcare Trainees to Improve the Care of Wisconsin Residents Living with Dementia

Art Walaszek, MD, Professor of Psychiatry

Stroke Prevention in the Wisconsin Native American Population

Robert Dempsey, MD, Professor, Department of Neurological Surgery

Strategic Education Grants

Transforming Medical Education (TME) 2019-2022: Re-envisioning Curriculum, Technology and New Programs through a Health Equity Lens

Shobhina Chheda, MD, MPH, Professor, Department of Medicine

University of Wisconsin Preventive Medicine Residency Program 2019-2022

Department of Population Health Sciences

Wisconsin Population Health Service Fellowship Program: Improving Health and Health Equity through Service and Training 2020-2023

Thomas Oliver, PhD, MHA, Professor, Department of Population Health Sciences

Strategic Research Grants

Making Wisconsin the Healthiest State Project

UW Population Health Institute

Survey of the Health of Wisconsin (SHOW) Renewal 2019-2022

Jomol Mathew, PhD, Associate Professor, Department of Population Health Sciences

ACTIVE GRANTS

In addition to this fiscal year's awarded and concluded grants, the following active grants were also supported by the Wisconsin Partnership Program.

COMMUNITY GRANTS

Community Collaboration Grants

Creating our Healthy Neighborhood: Reversing Disinvestment in Urban Milwaukee

Increasing Capacity for MACH OneHealth to Improve Health Access, Equity and Outcomes for Individuals Experiencing Homelessness and Housing Insecurity

ROOTed to REAP: Latinx/Indigenous Women Advancing Health and Food Equity in Dane County

The Good Hood: Making Meadowood a Healthy Community

Community Impact Grants

Accelerating Health Equity for Black Women in Wisconsin - Well Black Woman Institute

Addressing Stressors, Preventing Farmer Suicide: Social Connectedness and Health

Advancing Health Equity Through Legal Interventions for Low-Income Wisconsinites

Black Men's Mental Health and Well-Being

Building Tech Skills, Opportunities, Health and Wellness for Returning Citizens

Community-Campus Partnership to Create Mental Health Support for the Latino Community

Connecting Clinics, Campuses, and Communities to Advance Health Equity

Creating a Renewed and Culturally Vibrant Healthy Food System for Kaeyas Mamaceqtawak (The Ancient Movers)

Evaluating the Effectiveness of One City Schools: Preparing Children for School Success and Healthy Lives

First Breath Families: Helping Low-Income Moms Quit Smoking and Babies Grow Up Smoke-Free

Food Sovereignty in the Oneida Nation: A Comprehensive Approach to Health

Health Equity for Criminal Justice-impacted Women through Access to Housing

Healthy Communities through WEESN-Milwaukee: Supporting Quality Early Learning and Family Well-Being

Improving Birth Outcomes for Black Families through Community-Clinic Collaborations

Parenting Support Is Public Health: Reducing Health Disparities in the Child Welfare System

Preventing Early Expulsion to Promote Child Health

Community Impact Grants

Reducing Health Inequity Through Promotion of Social Connectedness
Reentry Rising MKE
Social Service Redesign
Southwestern Wisconsin Recovery Pathways
Supporting Social Emotional Health in K-12 African American Students
The Latino Dementia Health Regional Consortium
Wisconsin Rural Health and Substance Use Clinical Support (RHeSUS) Program

COVID-19 Response Grants

A Call to Action: Compassion Resilience Training for Parents and Family Caregivers
PATCH Youth Advocacy Fellowship for Social and Emotional Health
Restorative Justice in Schools and Communities: Facilitating Healing, Support, and Cultural Identity Affirmation for Young People
Supporting Healthy Black Families' Workgroups
Supporting the Mental and Social-Emotional Health Needs of Black, Brown, Multiracial, Trans & Nonbinary LGBTQ+ Adolescents Impacted by COVID-19
Supporting Youth through the La Crosse System of Care
Testing and Scaling Virtual and In-person Youth Group Therapy and Guardian Support Groups

Maternal and Child Health Grants

Birth Outcomes Made Better (BOMB) Doula Program
Bridging Community Supports to Achieve Healthy Births for Black Mothers
Strengthening Community Supports for Black Families in Rock County
Strong Fathers Strong Families Project
Supporting Healthy Babies through Strengthening Families
Today Not Tomorrow Family Resource Center Community Based Doulas and Family Support Programming

RESEARCH AND EDUCATION GRANTS

Collaborative Health Sciences Grants

Advancing Health Equity for Lupus Patients in Wisconsin: How a Care Continuum and Community Stakeholders Can Inform Interventions to Close Disparities Gaps

Comparison of Successful Colorectal Cancer Screening Strategies in Wisconsin Rural and Urban Settings: Achieving "80% in Every Community"

Evaluating a Novel Follow-up Intervention to Improve the Delivery of Follow-up Care for Low-Risk Breast Cancer Survivors in Wisconsin

Hexosamine Biosynthetic Pathway in Idiopathic Pulmonary Fibrosis

Post-Traumatic Stress Disorder (PTSD) Therapy for Wisconsin Prison Inmates

Prevention of HPV-Associated Anogenital Cancers Using HIV Protease Inhibitors

Rediscovering Rheumatoid Factor as a Unique Antiviral Agent in COVID-19

Towards an Integrated Understanding of Stress, Inflammation and Immune Response

COVID-19 Response Grants

Evaluating COVID-19 Response Efforts to Improve Health and Racial Equity in Milwaukee County

Implications of COVID-19 on Service Delivery, Health and Well-Being for People with Intellectual and Developmental Disabilities

Predicting Patient Outcomes In Wisconsin and Nationwide Using the University of Wisconsin's COVID-19 EHR Cohort Database

Responding to Dual Epidemics of COVID-19 and Overdose Among People Who Inject Drugs in Wisconsin

Widespread Protective Immunity Screening Against COVID-19 Using a Point-of-care Serology-profiling Biosensor

New Investigator Program Grants

Evaluating the Impacts of Wisconsin's Birth Cost Recovery Policy on the Health and Wellbeing of Low-Income Black Birthing Parents: A Community-Centered Approach

Non-invasive Diagnosis of Acute Kidney Injury in Premature Infants

Quantitative Functional Biomarkers of Cervical Remodeling During Pregnancy Using Ultrasound Imaging

Replicating the First Step of Human Vision in a Dish for Designing Effective Therapies to Cure Blindness.

Targeting Gene Therapy Vectors to Nuclear Sites to Improve Precision Medicine and Oncolytic Virotherapies

Vascular Effects of the Precision Interventions for Severe Asthma (VASC-PreCISE)

Strategic Research Grants

Understanding and Addressing Health Disparities in Wisconsin Through Statewide Partnerships

UW Institute for Clinical and Translational Research (ICTR) - Administration, Leadership and Evaluation Module

UW-Institute for Clinical and Translational Research (ICTR) - Biostatistics, Informatics and Research Design Support

UW-Institute for Clinical and Translational Research (ICTR) - Mentoring and Professional Development Module

UW-Institute for Clinical and Translational Research (ICTR) - Community Engagement Pilot Awards Program Module

Strategic Education Grants

Wisconsin Partnership Program Scholarship

View our [Funded Projects](#) page for grant descriptions and outcome reports.





Wisconsin Partnership Program
UNIVERSITY OF WISCONSIN
SCHOOL OF MEDICINE AND PUBLIC HEALTH